



ICD-9 to ICD-10

Quality Suite / Foundation Suite / Performance Registry

DARTNet is updating software to accommodate ICD10 diagnosis codes. These will be implemented and tested in Q4 2015.

For Quality Suite customers, if you see any issues with your Point of Care Action Items or Problems List related to ICD9 to 10 transition let DI know immediately. Remember to include patient examples to help the support team investigate the issue.

PQRS

Quality Suite / Foundation Suite / Performance Registry

DARTNet contracts with KPN Health to provide Certified PQRS services to our client. Contracting for PQRS will be directly through KPN Health. Let DARTNet know if you are interested in more information from KPN regarding PQRS.

EHR UPGRADING SOON?

Quality Suite / Foundation Suite

Remember to let DARTNet know when you are expecting a version update to your EHR. These updates can effect the DARTNet data connectors, data imports, data element mapping and access to EHR Interface.

KPN Health

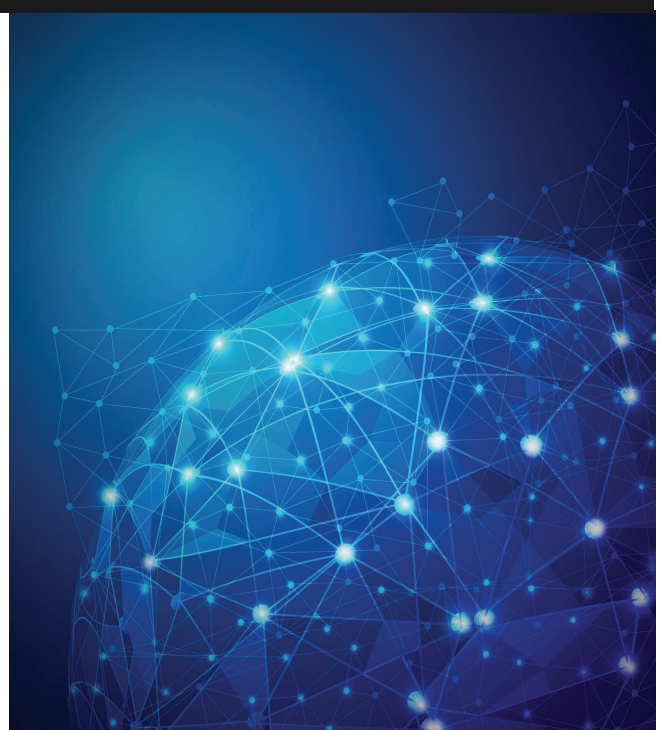
Quality Suite / Foundation Suite

As many of you know, KPN Health is now supporting CINA products and services. This change will not affect services provided by DARTNet Institute. DARTNet Institute has an agreement with CINA to license their products and provide services to you, the healthcare organization and healthcare provider.

If you have questions about or need support for any of the CINA products, please contact Rachel Bryan at DARTNet Institute directly at 800-434-0278 extension 1 or rachel.bryan@dartnet.info.

KPN Link

To learn more about KPN Health visit <http://www.kpnhealth.com/>



The DARTNet Institute is a rapidly growing collaboration of practice-based research networks that are building a national collection of data from electronic health records, claims, and patient-reported outcomes. The networks blend quality improvement, effectiveness, and translational research with a data-driven learning system.

PPR Updates by Data Source

DI Quality / Foundation

The DI team is finishing validation of Cerner and eCW data and will be extracting DI Quality and Foundation Suite client data in Q4 2015. We hope that by the beginning of 2016 all Quality / Foundation Suite clients will have data in the Registry.

Cerner ASP Clients

Version 2 data files are almost complete. The new data files will be transferred for each organization throughout October / November. New data will replace the current data in the Registry. Once issues are resolved we will email Super Users with login credentials and a link to training videos.

eCW Clients

eCW data files have been validated and we are currently piloting the registry with 2 Organizations. We hope to roll out data for all eCW practices by end of 2015.

Non-hosted Clients

DARTNet is working directly with a variety of individual clients that represent ~15 other EHR data sources. Please contact DIRegistry@dartnet.info if you fall into this category and have questions regarding your data.

PPR by the Numbers

As of October 14, 2015 there were:

158	Organizations
2,562	Care Sites
24,719	Providers
6,138,825	Patients



Practice Performance Registry (PPR) - Meaningful Use Update

Quality Suite / Foundation Suite / Performance Registry

On October 6th the Centers for Medicare and Medicaid Services (CMS) released a final rule to modify Meaningful Use from 2015 to 2017 as well as to create Stage 3 requirements.

First, the rule finalized a reporting period in 2015 of any continuous 90 days for all Eligible Providers (EPs). For 2016 and 2017 the reporting period will be a full calendar year.

Second, the difference between core and menu objectives was removed. Under Public Health & Clinical Registry Reporting, EPs are required to attest to 2 of the following 3 measures for modified Stage 2 (Stage 1 in 2015 can choose 1 of 3):

- ⇒ Immunizations Registry
- ⇒ Syndromic Surveillance
- ⇒ Specialized Registries (includes cancer registries) (**DARTNET REGISTRY**)

Eligible Providers need to register intent within the first 60 days of the reporting period.

EPs can begin Stage 3 in 2017, or remain on modified MU. Beginning in 2018, all EPs would be in Stage 3. All years of Stage 3 will be a full calendar year. EPs will be required to attest to 2 of the following 5 options:

- ⇒ Immunizations
- ⇒ Syndromic Surveillance
- ⇒ Electronic Case Reporting
- ⇒ Public Health Registry Reporting
- ⇒ Clinical Data Registry Reporting (**DARTNET REGISTRY**)

In more good news, DARTNet is exploring the creation of a second registry – a Patient Safety clinical data registry. If we finalize this registry, our customers will be able to participate in two separate registries by submitting their data to DART-

New Tool—Apervita Population Management

Quality Suite / Foundation Suite

DARTNet is partnering with Apervita—a health analytics data platform—to develop a population management tool that will allow KPN (CINA) software users to run reports on specific clinical metrics directly from the KPN CDR.

This tool is a basic population management solution utilizing an Excel user interface which customers will access either on their DARTNet computer or download to a personal computer. The first system is in beta testing now and will be made available shortly to DARTNet customers.

Currently, there are 9 metrics available around Chronic Kidney Disease (CKD) as they were funded by a grant to improve CKD recognition and treatment. Additional metrics in prevention and chronic disease management will be developed in the next 3-6 months.

Free 3-Month Trial

DARTNet is offering a Free 3-month trial to any Quality or Foundation Suite us-

Contact Us

DARTNet Institute
12635 East Montview Blvd,
Suite 136
Aurora, CO 80045

Client Services—Rachel Bryan
1-800-434-0278 ext 1
Rachel.Bryan@dartnet.info

Customer Support and Clinical Data Registry—Colleen Long
colleen.long@dartnet.info
DIRegistry@dartnet.info

Operations—Debbie Graham
1-800-434-0278 ext 2
Deborah.graham@dartnet.info

Business Development—Allyson Jasper
1-800-434-0278 ext 7
allyson.jasper@dartnet.info

Research / CEO—Wilson Pace

DARTNet Institute—Informing Practice. Improving Care.



Research Highlights

Quality Suite / Foundation Suite / Performance Registry

DARTNet Institute is involved with several recently funded research studies including:

- 1) Evidence Now Southwest—a \$15M initiative to build a critical infrastructure to help smaller primary care practices improve the heart health of their patients by applying the latest medical research and tools. Funded by the Agency for Healthcare Research and Quality and led by the University of Colorado at Denver.
- 2) CDC Diabetes Risk—Registry of individuals at high risk of developing Type 2 Diabetes. A \$5M initiative funded by Centers for Disease Control and Prevention and led by Westat Research Corporation.
- 3) Integrating Behavioral Health and Primary Care for Comorbid Behavioral and Medical Problems—An \$18.5M initiative funded by Patient-Centered Outcomes Research Institute (PCORI) and led by the University of Vermont College of Medicine
- 4) Safety of ADHD Medications—A \$500k project funded by the Federal Drug Administration and led by the American Academy of Family Physicians National Research Network.